



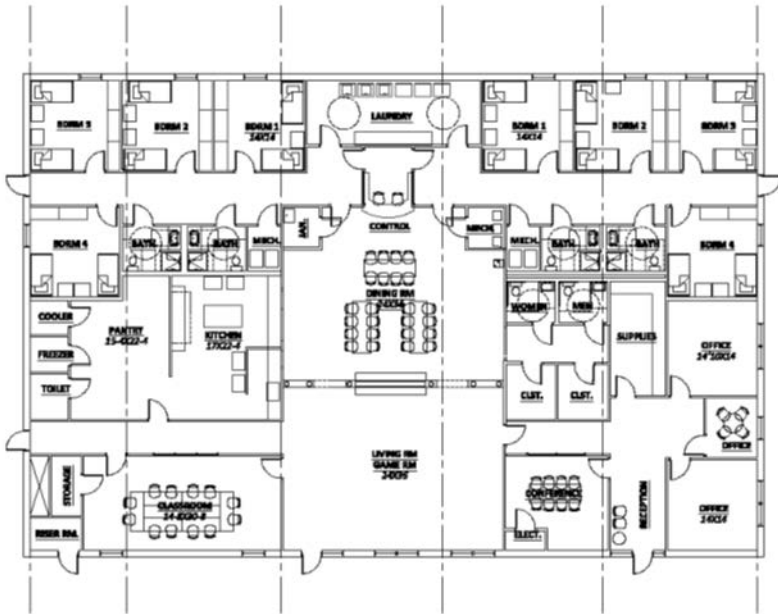
PROPOSED EXTERIOR VIEW



PROPOSED FLOOR PLAN

COMPREHENSIVE JUVENILE SERVICES
 Store Renovations for Group Home
 120 W 6th Street
 Mulberry, Arkansas





PROPOSED FLOOR PLAN
 SCALE: 3/32" = 1'-0"

	PROJECT NO: 21-009 DATE: 09-03-2021
	PROJECT: COMPREHENSIVE JUVENILE SERVICES GROUP HOME
LOCATION: MULBERRY, ARKANSAS	SHEET TITLE: PROPOSED FLOOR PLAN SHEET NO: G.2

1249 Mulberry, Box 100, Mulberry, AR 71574
 501-932-2222
 www.cjs.org